

# STUR<sup>®</sup>

untouchable in heavy duty



**BATA INDUSTRIALS**  
THE SAFETY SHOE

# STUR

untouchable in heavy duty

## MEET STUR!

### UNTOUCHABLE IN HEAVY DUTY

It's here! The new collection from Bata Industrials: STUR. Unique in its kind. The first safety shoe that offers the highest possible heavy duty protection combined with optimum comfort. With the reliable durability of Bata Industrials. With the unprecedented experience of Michelin's perfect grip. And with a design that deserves to be seen. A collection in which you can see and feel our years of expertise and smart technologies.

### ROBUST STYLISH COMFORT

Only the best and most durable materials have been used for the new STUR collection, such as sturdy pull up leather, strong microfiber, and high-quality rubber and nylon with high abrasion resistance. Perfect for heavy duty outdoors, in cold, wet, muddy and harsh working conditions. STUR is evidence that a safe, heavy

duty shoe or boot can also look good. All seven models have been designed in Italy. Stylish, with an eye for detail. An aesthetically pleasing, comfortable and superior ergonomic collection that meets all prescribed protection levels.

### SMART TECHNIQUES

The new STUR collection shows that optimum safety, comfort and durability is perfectly combinable. All models have unique features that make them suitable for specific extreme working conditions. Antibacterial and breathable. Waterproof thanks to our HDry® technology. Always a fast and effortless precision fit with our BOA® Fit System. And extra safety thanks to the penetration resistant insert of FlexGuard® composite in the sole. All these are important requirements for a heavy duty safety shoe. STUR is the first collection with a three-layer sole featuring an extra strong and abrasion

resistant outsole. Developed in collaboration with Michelin. Inspired by the tire of an all-terrain vehicle. For the best possible grip and control.

The best you can get at this price. The STUR collection has it all. And you can too, with STUR!

SAFETY, DURABILITY,  
COMFORT!





# STUR

untouchable in heavy duty

## LASTS WITH THE BATA RECIPE

All STUR models have the well-known Bata Fitting: a last developed especially for and by us, our secret recipe. A last is a mold made according to the average shape of feet. It is the same last we used for our Traxx collection. A last that has proven itself for over 20 years. A tailor-made last for safety shoes, based on the average foot needing ultimate protection and comfort.

## MADE FOR EXTREME CONDITIONS

All seven models have an upper made of high-quality leather, strong microfiber or a special ballistic nylon, and are water-repellent or have a waterproof HDry® membrane. The special double injection PU-PU/rubber sole is totally unique: together, the soles offer perfect grip, stability, shock absorption and energy return. Basalt and Galena are also equipped with a TPU ankle support that provides additional reinforcement and stability. The safety toecap is made of aluminum, and the penetration resistant insert is made of FlexGuard® composite. For more comfort, we have combined these materials with a very comfortable Premium Fit inlay sole and Odor Control. Almost all models have a 3D breathable mesh lining. 3D mesh is an open structure that allows air to circulate. In combination with the Odor Control treatment, ensuring fresh feeling feet all day long.

## LIGHTWEIGHT ALUMINUM SAFETY TOECAP

STUR shoes are equipped with a lightweight aluminum toecap. Much lighter than traditional steel and yet just as safe. The aluminum version is sturdy and makes walking easier and lighter, without compromising on protection or safety.

## DOUBLE PU-MIDSOLE FOR SHOCK ABSORPTION AND REBOUND

These two PU layers provide the perfect balance between rebound and shock absorption. The upper PU-midsole returns a lot of energy, thus reducing fatigue. The second PU-midsole provides great shock absorption after impact. The retained energy is returned to the foot by the upper midsole.

## MICHELIN OUTSOLE

For decades, Michelin have been developing and improving the performance of their tires. A benchmark name when it comes to grip. Especially for the STUR collection, we developed a PU-PU/rubber sole with double injection technology, in cooperation with Michelin. Made from a strong heavy duty material. Inspired by a tire engineered for extreme conditions for even more traction, stability and shock absorption. The sole has an abrasion resistant outer toecap. Strong and powerful, with the grip of an all-terrain vehicle. Excellent performance from start to finish.





Michelin is a byword when it comes to grip. A recognized brand that translates tire design into shoe soles. Desired performance is the starting point. Bata Industrials has years of experience in developing the optimal interaction between the sole and the upper of a safety shoe. A very important factor in the joint design process.

# ALL TERRAIN SOLE: DESIGNED WITH MICHELIN



Together we developed a heavy duty rubber sole for STUR, inspired by an agricultural Michelin tire. This tire has to perform on dirty and wet surfaces, in tough conditions. Together, we were able to transform the exceptional profile of this tire into a rubber outsole with an optimized profile that provides excellent grip and stability on any surface. Dry, wet, muddy or uneven. The perfect sole for our technical safety shoes in the STUR collection.

The high-quality rubber makes this extreme sole even safer and stronger. Extremely durable, abrasion resistant, heat and cold-resistant. With grooves that ensure that mud and clay easily come loose. Comparable to an all-terrain vehicle. And yet very comfortable and stylish due to the materials and techniques used.



## PERFECT BALANCE BETWEEN REBOUND AND SHOCK ABSORPTION

Fit until the end of your working day

The sole consists of three different compositions: the rubber outsole and two different densities of PU for the midsoles. Thanks to the double injection technology we used for the midsoles, we were able to create a combination of two different components with different softnesses. This offers a perfect balance between stability, shock absorption and rebound

### REBOUND

The PU-midsole is more rigid and provides the rebound. This part gives a lot of the energy back and thus reduces fatigue. The perfect rebound for safety shoes.

### SHOCK ABSORPTION

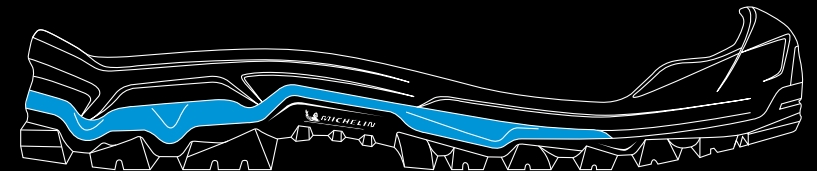
The upper PU-midsole is made from softer material and provides excellent shock absorption. This area absorbs the shocks after impact and retains the

energy that the upper midsole is able to return.

### STABILITY

The stiffer material of the midsole is also used on the sides. The lower midsole is a construction that incorporates the upper midsole. Among other things, this ensures a better connection between the upper and the outsole. And it offers even more stability (the 'box' principle). Thanks to the double injection, the midsoles were given different degrees of softness. The mold was given different thicknesses. In this way, we created stability exactly where needed.

The Basalt and Galena models are equipped with an ankle support made of TPU material that further increases stability. This system helps to support the ankle and stabilize the shoe.



# SAFETY UNDER ALL CIRCUMSTANCES

Extreme conditions call for next-level safety measures. STUR is designed to perform optimally in hazardous environments.



## ALWAYS SHARP AND ALERT

All models in the STUR collection have a FlexGuard® composite insert in the sole. This prevents sharp objects from penetrating the shoe from below. In addition, the Diorite model is made of ballistic nylon. Ballistic nylon is known for its durability and cut resistance. It was originally developed in the Second World War as a basic material for clothing to protect pilots, for example, from shrapnel and objects in the event of shelling or a crash. Today, ballistic nylon is used for all kinds of applications. It is the perfect material for a safety shoe that also protects your foot from sharp objects from above.

## RESISTANT TO HEAT

The Scoria model has a quick-release Velcro closure for easy donning and doffing of the safety shoes and has heat and flame-retardant stitching. The mid-cut shoe is made from durable full grain leather that offers great resistance to welding and grinding sparks. That makes this model ideal for welders who work indoors or outdoors.

## FAST AND EFFORTLESS PRECISION FIT WITH BOA® FIT SYSTEM

A number of models feature an adjustable dial and a super-strong lightweight cable in flexible cable guides that allow the shoe to be tightened. By turning the knob, the cable is tightened, loosened (quick release) and clicked into place. It ensures an even distribution of pressure. Each configuration is specially designed for performance.

- Adjustable fit
- Automatic, even pressure distribution with every step
- Adapts to changing working conditions in the shoe
- No uncomfortable pressure points
- Does not loosen and therefore prevents tripping or falling

## DURABLE QUALITY, GUARANTEED.

## HDry® TECHNOLOGY

The Kyanite model is equipped with the innovative HDry® technology. The upper of the shoe is laminated on the inside with a special 3D layer. There are no seams or openings that allow water to enter. So it is truly waterproof. This way, the shoe remains light, even when it gets wet. In addition, the HDry® technology ensures that the shoe remains breathable. This ensures optimal moisture regulation and great comfort.



# STUR COLLECTION

STUR is a collection of safety shoes with the highest possible safety standard at the right price.

## STUR<sup>®</sup> basalt

This basic mid-cut model from STUR is made from pull up leather and has all the features of a serious heavy duty safety shoe: extreme grip, durability and lots of comfort. These properties, together with the improved stability, make this an all-season model, ideal for heavy duty outdoor work.

### BASALT S3 OUTDOOR | ALL SEASON | HEAVY INDUSTRIAL

- > Pull up leather/nylon upper/abrasion resistant PU toecap
- > FlexGuard® composite penetration resistant insert
- > Aluminum toecap
- > Mesh lining
- > Odor Control
- > Dual density PU-/rubber sole (Michelin)
- > Width W
- > Size range: 37-48
- > UK size range: 4-13 (including 6.5 and 9.5)



## STUR<sup>®</sup> galena

This low-cut safety shoe made from pull up leather has all it takes to provide the perfect protection in heavy duty working conditions. This model combines extreme grip, durability and comfort with improved stability, making it ideal for heavy outdoor work in any season of the year.

### GALENA S3 OUTDOOR | ALL SEASON | HEAVY INDUSTRIAL

- > Pull up leather/nylon upper/abrasion resistant PU toecap
- > FlexGuard® composite penetration resistant insert
- > Aluminum toecap
- > Mesh lining
- > Odor Control
- > Dual density PU-/rubber sole (Michelin)
- > Width W
- > Size range: 37-48
- > UK size range: 4-13 (including 6.5 and 9.5)







## LARGE COMFORT

STUR is resistant to mud, water and low temperatures.

The high rebound and shock absorption of the PU-midsole makes this shoe extremely comfortable to wear in all conditions.

- > Waterproof/water repellent
- > Self-cleaning sole
- > High rebound and shock absorption

# STUR<sup>®</sup>

diorite

Extreme conditions call for high-level safety. This mid-cut model made of microfiber and ballistic nylon is designed to perform optimally in hazardous environments with sharp objects. The penetration resistant FlexGuard<sup>®</sup> composite insert in the sole and the extra strong ballistic nylon offer perfect protection.

### DIORITE S3

OUTDOOR | ALL SEASON | HEAVY INDUSTRIAL | CUT RESISTANT

- > Microfiber/ballistic nylon/abrasion resistant PU toecap
- > FlexGuard<sup>®</sup> composite penetration resistant insert
- > Aluminum toecap
- > Mesh lining
- > Odor Control
- > Dual density PU-/rubber sole (Michelin)
- > Width W
- > Size range: 37-48
- > UK size range: 4-13 (including 6.5 and 9.5)



# STUR<sup>®</sup>

scoria

Comfort, durability and safety are combined with the highest level of protection. This full grain leather mid-cut model has a quick release closure for quick on and off actions. The heat-resistant stitching is flame-retardant, which means that this mid-cut model offers the perfect protection to welders, both indoors and outdoors.

### SCORIA S3

WELDING | ALL SEASON | HEAVY INDUSTRIAL

- > Printed leather upper/abrasion resistant PU toecap
- > FlexGuard<sup>®</sup> composite penetration resistant insert
- > Aluminum toecap
- > Quick release closure
- > Mesh lining
- > Odor Control
- > Dual density PU-/rubber sole (Michelin)
- > Width W
- > Size range: 37-48
- > UK size range: 4-13 (including 6.5 and 9.5)
- > EN20349-2:2017 (Welding)



## EXTREME GRIP

We've worked with Michelin to create a sole that has the grip and stability of an all-terrain vehicle. The sole's profile provides adhesion and grip in several directions.

- › Extended grip
- › Anti-slip
- › Improved stability



# STUR<sup>®</sup>

bauxite

Looking for safety in style? Then this stylish boot is designed especially for you. Made from pull up leather, they are easy to put on and take off. Perfect for those moments when you need to switch working environments. The CI (cold insulating) certified outsole makes the boot perfect for cold conditions. Extreme grip, durability and comfort are also a matter of course here.

### BAUXITE S3

OUTDOOR | COLD WEATHER | HEAVY INDUSTRIAL

- › Pull up leather upper/abrasion resistant PU toecap
- › FlexGuard® composite penetration resistant insert
- › Aluminum toecap
- › Mesh lining
- › Odor Control
- › Dual density PU-/rubber sole (Michelin)
- › Width W
- › Size range: 37-48
- › UK size range: 4-13 (including 6.5 and 9.5)



# STUR<sup>®</sup>

dionte

This mid-cut safety shoe made of microfiber is designed for cold weather conditions. The outsole has an extra certification, CI (cold insulating) that keeps the foot warm. With the integrated BOA® Fit System, the shoe always fits perfectly around the foot, providing extra comfort. The ideal combination of extreme grip, durability and comfort.

### DIONTE S3

OUTDOOR | COLD WEATHER | HEAVY INDUSTRIAL

- › Microfiber/nylon upper/abrasion resistant PU toecap
- › FlexGuard® composite penetration resistant insert
- › Aluminum toecap
- › BOA® Fit System
- › Mesh lining
- › Odor Control
- › Dual density PU-/rubber sole (Michelin)
- › Width W
- › Size range: 37-48
- › UK size range: 4-13 (including 6.5 and 9.5)







**BATA INDUSTRIALS**  
THE SAFETY SHOE

STAND STRONG IN YOUR SAFETY SHOES WITH THE BRAND NEW STUR COLLECTION: PERFECT FOR HEAVY DUTY! ALSO IN MUDDY, COLD AND WET CONDITIONS. EXTREMELY SAFE AND COMFORTABLE, BUT COOL ENOUGH TO WEAR ON THE STREET. NOW ON SALE: THE BATA INDUSTRIALS STUR COLLECTION.

# STUR

untouchable in heavy duty

WHY THEY EVER PUT THAT GENERATOR BETWEEN THE WAREHOUSE AND THE RIVER IS STILL A MYSTERY....

IF YOU'RE ALREADY COLD, I'LL GO AND RESET IT!

OK, WILL, GREAT IF YOU CAN DO THAT. BRRRR, IT'S FREEZING COLD ALREADY!

I'M WEARING TOTALLY THE WRONG SHOES...

HEY THERE! WHO'S THE STRONGEST HERE?

**OH YEAH!!**  
THE NEW  
BATA STUR  
KYANITE S3!

EXTREME GRIP, PERFECTLY INSULATED AND WATERPROOF! EXACTLY WHAT YOU NEED IN COLD, WET ENVIRONMENTS!

SOLES  
BY



[bataindustrials.com/stur](http://bataindustrials.com/stur)

STUR COLLECTION

## DURABLE

STUR is designed to perform in tough rugged conditions and shows less signs of wear because of the use of abrasion resistant and highly durable materials. The robust heel and forefoot protection provide even more durability.

- > Strong and abrasion resistant
- > Great breathability
- > Robustly built

## STUR<sup>®</sup> kyanite

This boot combines safety, durability and comfort with the ability to perform in extremely cold weather conditions. Made of high quality pull up leather and equipped with an insulating faux fur lining in the upper. At the foot, the shoe is equipped with an insulating Vegam lining. Vegam is a synthetic insulating material that is very breathable. It retains heat efficiently. The outsole is CI-certified (cold insulating). With the integrated BOA® Fit System, you can always quickly and effortlessly achieve the perfect fit.

### KYANITE S3

OUTDOOR | COLD WEATHER | HEAVY INDUSTRIAL

- > Pull up leather/nylon upper/abrasion resistant PU toecap
- > FlexGuard® composite penetration resistant insert
- > Aluminum toecap
- > BOA® Fit System
- > Mesh lining
- > Odor Control
- > Dual density PU-/rubber sole (Michelin)
- > Width W
- > Size range: 37-48
- > UK size range: 4-13 (including 6.5 and 9.5)





**SERIOUSLY.**